

OMNICHROMA

The future of composites – One shade fits all.



Indications

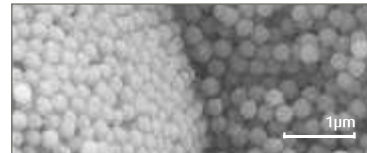
- ✦ Anterior and posterior areas
- ✦ Composite veneers
- ✦ Diastema closure
- ✦ Composite/ceramic repair

Properties

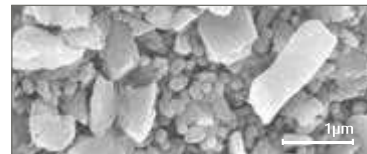
- ✦ Perfect shade match
- ✦ Simplified inventory management
- ✦ Excellent adaptability
- ✦ Non-sticky
- ✦ Good Polishability
- ✦ Remarkable Glossiness

Technical information

SEM images of the fillers



OMNICHROMA (TOKUYAMA DENTAL)



Tetric EvoCeram (Ivoclar Vivadent)

Source: TOKUYAMA DENTAL R&D

Pack sizes available

Refill:

- Single syringe (4g)
- 20 capsules (0.2g each)

OMNICHROMA BLOCKER

Ideal supplement for Omnichroma when it comes to extensive Class III and Class IV restorations or for masking discolourations.



Indications

- ✦ Masking of slight discolourations
- ✦ Reconstructing highly opaque tooth

Properties

- ✦ Ideal supplement for OMNICHROMA
- ✦ Good Polishability
- ✦ Strong masking effect

Technical information

Recommended incremental thickness is 0.5mm.
For extreme discolourations increase the thickness of the layer accordingly.



Discoloured cavity floor



OMNICHROMA BLOCKER
(TOKUYAMA DENTAL)

Data: TOKUYAMA
DENTAL R&D

Pack sizes available

Refill:

- Single syringe (4g)
- 20 capsules (0.2g each)

ESTELITE ASTERIA

Developed to realize simplified 2 step layering composite restorations as well as outstanding esthetic results.



Indications

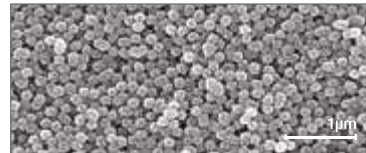
- ✦ Anterior and posterior areas
- ✦ Composite veneers
- ✦ Diastema closure
- ✦ Composite/ceramic repair

Properties

- ✦ Perfect restorations using just 2 shade layers
- ✦ Unique chameleon effect
- ✦ Rapid curing in 10 seconds
- ✦ Extended working time of 90 seconds
- ✦ Very high lustre durability
- ✦ Abrasion resistance
- ✦ Low linear shrinkage
- ✦ Optimal handling

Technical information

SEM images of the fillers



ESTELITE ASTERIA (TOKUYAMA DENTAL)



Filtek Supreme XTE (3M Espe)

Source: TOKUYAMA DENTAL R&D

Pack sizes available

Syringe Essential Kit:

- 7 syringes (4g each) in 7 shades
A1B, A2B, A3B, A3.5B, A4B, NE, OcE

Capsules Essential Kit:

- 105 capsules (0.2g each) in 7 shades
15 x A1B, A2B, A3B, A3.5B, A4B, NE, OcE

Refill:

- Single syringe (4g)
- 15 capsules (0.2g each)

Custom Shade Selector for 15 shades

Available in 12 different shades

| | | | | | | | | |
|---------|-----|-----|-----|-----|-------|-----|-----|----|
| Dentine | (7) | | | | | | | |
| | | A1B | A2B | A3B | A3.5B | A4B | B3B | BL |
| Enamel | (5) | | | | | | | |
| | | NE | TE | YE | WE | OCE | | |

ESTELITE COLOR

Low viscosity, light-cured tint for individualised shade characterizations of direct and indirect resin restorations.



Indications

- ✦ Custom shade characterisation of direct and indirect resin restorations
- ✦ Masking of discoloured teeth

Properties

- ✦ 9 different shades
- ✦ 4 different opaques
- ✦ Low viscosity
- ✦ Ideal supplement for ESTELITE ASTERIA

Technical information

With the aid of the double-ended brush the stains can be applied accurately as required.



Pack sizes available

Color Kit:

- 13 single syringes (0.9g each) in 13 shades: blue, grey, lavender, ochre, dark brown, white, yellow, clear, red, pink opaque, low chroma opaque, medium chroma opaque, high chroma opaque

Refill:

- Single syringe (0.9g)
- Brush No. 24:**
- Pack of 5

Available in 13 different shades

| | | | | | | | | | | |
|----------|-----|-------|-----------|-------------|----------|------|-------|-----|----------|------------|
| Standard | (9) | | | | | | | | | |
| | | clear | white | blue | yellow | grey | ochre | red | lavender | dark brown |
| Opaque | (4) | | | | | | | | | |
| | | pink | high chr. | medium chr. | low chr. | | | | | |

ESTELITE SIGMA QUICK

Submicron composite with chameleon mimetic properties,
perfect for enhancing your work.



Indications

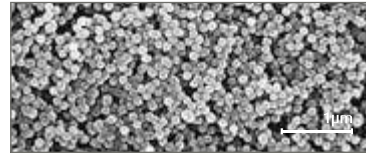
- ✦ Anterior and posterior areas
- ✦ Composite veneers
- ✦ Diastema closure
- ✦ Composite/ceramic repair

Properties

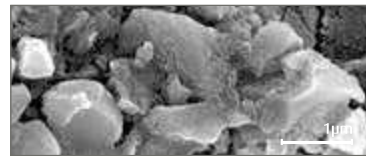
- ✦ Unique chameleon effect
- ✦ Rapid curing in 10 seconds
- ✦ Extended working time of 90 seconds
- ✦ High lustre durability
- ✦ Abrasion resistance
- ✦ Low linear shrinkage
- ✦ Optimal handling

Technical information

SEM images of the fillers



ESTELITE SIGMA QUICK (TOKUYAMA DENTAL)



Venus Pearl (Kulzer)

Source: TOKUYAMA DENTAL R&D

Pack sizes available

- Syringe Intro Kit
- Syringe System Kit
- Syringe Kit of 3
- Syringe Promo Kit of 6
- Refill: Single syringe (3.8g)
- Refill: 20 capsules (0.2g each)
- Shade Selector with 20 shades

Available in 20 different shades

| | | | | | | | | | | | | | | | | |
|------------|------|--|--|--|--|--|--|--|--|--|--|--|--|--|--|--|
| Standard | (14) | | | | | | | | | | | | | | | |
| Bleach | (2) | | | | | | | | | | | | | | | |
| Opalescent | (3) | | | | | | | | | | | | | | | |
| Opaque | (1) | | | | | | | | | | | | | | | |

ESTELITE POSTERIOR

Composite for posterior restorations, highly resistant to abrasion and excellent physical properties, ideal with direct restorations in Class I and II.



Indications

- ✦ Posterior area
- ✦ Composite/ceramic repair

Properties

- ✦ Unique chameleon effect
- ✦ Excellent physical properties
- ✦ Rapid curing in 10 seconds
- ✦ Optimal handling
- ✦ Low linear shrinkage
- ✦ High radiopacity

Technical information

Physical properties

| | |
|----------------------|------------------|
| Flexural strength | 209 MPa |
| Flexural modulus | 20,2 GPa |
| Compressive strength | 443 MPa |
| Radiopacity | 290 Al mm |

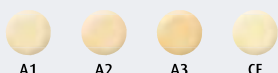
Source: TOKUYAMA
DENTAL R&D

Pack sizes available

Refill:

- Single syringe (4.2g)

Available in 4 different shades



A1

A2

A3

CE

ESTELITE UNIVERSAL FLOW

ESTELITE UNIVERSAL FLOW is a flow composite that can be used for all cavity classes.

Due to its unique combination of spherical supra-nano particles and the novel composite filler, it meets all demands and offers the dentist additionally the choice of three different viscosities.



Indications

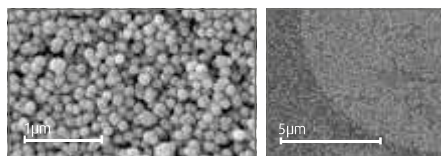
- ✦ Anterior and posterior areas
- ✦ Cavity liner
- ✦ Blocking out undercuts
- ✦ Composite/ceramic repair

Properties

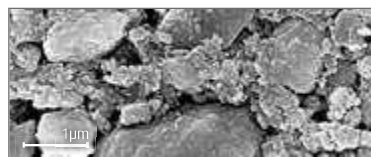
- ✦ Choice of three viscosities
- ✦ Enhanced chameleon effect
- ✦ Rapid curing in 10 seconds
- ✦ Improved flowability
- ✦ High lustre durability
- ✦ Low shrinkage
- ✦ Excellent polishability
- ✦ Outstanding resilience

Technical information

SEM images of the fillers



ESTELITE UNIVERSAL FLOW (TOKUYAMA DENTAL)



Filtek Supreme Ultra Flow (3M Espe)

Pack sizes available

Refill:

- Single syringe (1.7g, medium only)
- Single L-syringe (3.0g)

Refill:

- 20 capsules (0.2g each, medium only)
- Shade Selector with 12 shades

- 50 application tips metal (for single L-syringe)
- 50 application tips plastic (for single syringe)

Available in 12 different shades

| | | A1 | A2 | A3 | A3.5 | A4 | A5 | B3 | OPA2 | OPA3 | OPA4 | CE | BW |
|-----------|------|----|----|----|------|----|----|----|------|------|------|----|----|
| Super Low | (6) | ● | ● | ● | ● | ● | ● | | | | | | |
| Medium | (12) | ● | ● | ● | ● | ● | ● | ● | ● | ● | ● | ● | ● |
| High | (7) | ● | ● | ● | ● | | | | ● | ● | ● | | |

ESTELITE BULK FILL FLOW

ESTELITE BULK FILL FLOW is a low viscosity, light-cured, radiopaque composite resin. This low stress flowable material can be placed by 4mm increments.



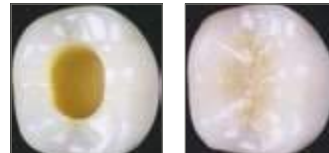
Indications

- ✦ Anterior and posterior areas
- ✦ Cavity liner
- ✦ Blocking out undercuts
- ✦ Composite/ceramic repair

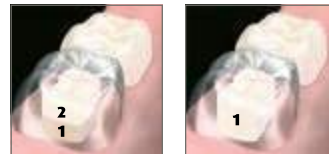
Properties

- ✦ Reduced polymerisation stress due to new „edgeless“ composite fillers
- ✦ Sufficient opacity for esthetic restorations without capping layer
- ✦ Rapid curing in 10 seconds
- ✦ Excellent cavity adaption
- ✦ Self-levelling
- ✦ Controlled refractive index

Technical information



Change of the refractive index during polymerization for aesthetic restorations



Filling without the need of an additional capping layer

Pack sizes available

Refill:

- Single syringe (3.6g)

Refill:

- 20 capsules (0.2g each)
- 50 application tips metal

Available in 4 different shades

