

Resin-based Dental Restorative Material

Sigma
ESTELITE Σ QUICK

QUICK-CURE

Utilizing Tokuyama's patented innovative initiator system "Radical Amplified Photopolymerization Technology" (RAP), Estelite Σ Quick offers reduced curing time and excellent stability to ambient light while maintaining the superior esthetic and physical properties of Estelite Σ .



Benefits

- Quick curing time - 10 sec. with a halogen light ($\geq 400\text{mW}/\text{cm}^2$)
- Extended working time - 90 sec. under ambient light (10,000 lx)
- Outstanding polishability
- High gloss retention over time
- Wide shade matching range (chameleon effect)
- High wear resistance
- Less wear to opposing teeth
- Low shrinkage
- Good radiopacity
- Available in 20 shades



Indications

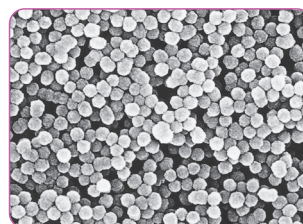
- Anterior and posterior restorations
- Composite veneer
- Diastema closure
- Composite/porcelain repair

Diastema Closure

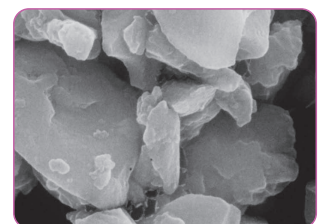


Case courtesy of Toshio Kanamura, DDS

SEM Images of Filler Shape



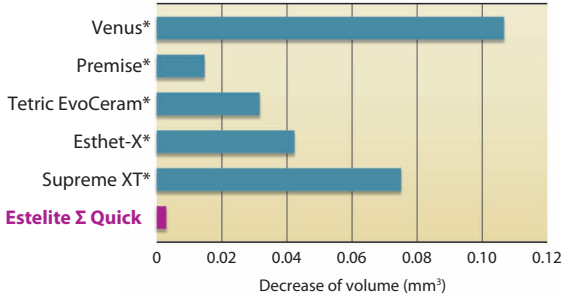
Estelite Σ Quick



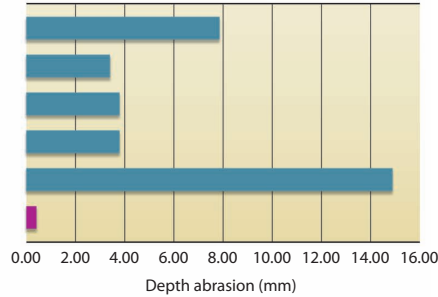
Esthet-X*

Excellent Physical Properties

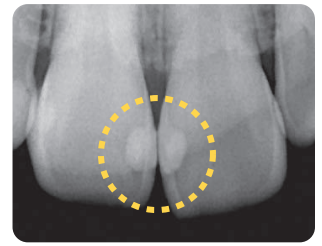
Wear** (Antagonistic Wear Test)



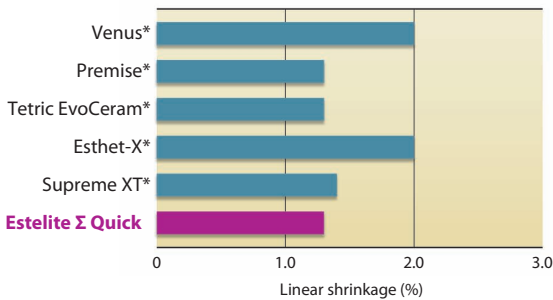
Opposing Teeth Abrasion** (Antagonistic Wear Test)



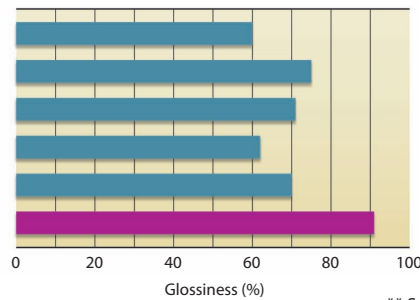
Good Radiopacity



Shrinkage (Linear%)**



Gloss (%)**



Optimal Handling



** Source: Tokuyama Dental R&D

* Not a registered trademark of Tokuyama Dental

Product Packages Available



Estelite Σ Quick Syringe System Kit

ESTELITE Σ QUICK Kit

Estelite Σ Quick Syringe System Kit

Contents: 1 syringe (3.8g) of each shade: A1, A2, A3, A3.5, OA3, OPA2;
1 syringe Estelite Flow Quick (1.8g) of each shade: A2, A3, OA3, 27 tips
1 bottle Bond Force (5ml), 1 dispensing well, 50 applicators; shade guide

Estelite Σ Quick 3 Syringe Kit

Contents: 1 syringe (3.8g) of each shade: A2, A3, OA3

Estelite Σ Quick PLT Intro Kit

Contents: 10 PLTs (0.2g each) of each shade: A2, A3;
5 PLTs (0.2g each) of each shade: A1, A3.5, OA3, OPA2;
1 bottle Bond Force (1ml), 1 dispensing well, 25 applicators; shade guide

Estelite Σ Quick PLT Mini Kit

Contents: 5 PLTs (0.2g each) of each shade: A1, A2, A3, OA2



ESTELITE Σ QUICK Refill

Estelite Σ Quick Syringe Refill

Contents: 1 syringe (3.8g)
Available shades: A1, A2, A3, A3.5, A4, A5, B1, B2, B3, B4, C1, C2, C3, OA1, OA2, OA3,
OPA2, BW (Bleach White), WE (White Enamel), CE (Clear Enamel)

Estelite Σ Quick PLT Refill

Contents: 20 PLTs (0.2g each)
Available shades: A1, A2, A3, A3.5, A4, A5, B1, B2, B3, B4, C1, C2, C3, OA1, OA2, OA3,
OPA2, BW (Bleach White), WE (White Enamel), CE (Clear Enamel)

*Limited availability of some products in certain areas. Contact your local dealer for availability.

Specifications are subject to change without obligation on the part of the Manufacturer

Manufactured by
Tokuyama Dental Corporation

38-9, Taitou 1-chome, Taitou-ku, Tokyo, Japan
TEL: +81-3-3835-2261 FAX: +81-3-3835-7224
Email: export@tokuyama-dental.co.jp
URL: www.tokuyama-dental.com

080701